



PDA Intro



- Visual instructions on how the basic functions of a PDA work.
- Illustrated with pictures, sound and a minimum of text.
- Developed for new PDA users with basic PC knowledge.
- Installation of software requires a PDA with Windows Mobile 2003 or Windows Mobile 5 (WM5) operating system.
- Is suitable for PDAs which use portrait screen size (QVGA, VGA).
- Download demo version from www.handstep.com

Category:	M-learning
Development year:	2006
Language:	Danish, English
Memory requirements:	20 MB
Duration:	45 minutes

- Get to know your PDA quickly
- Learn at your own speed
- Use it as a reference when you have forgotten a function.

Challenge

Experience has shown that instruction in the basic functions of the PDA is crucial for a successful implementation of a mobile strategy. Employees are introduced to and become comfortable with the PDA and learn how the fundamental functions in the operating system work.

Lack of knowledge of new technology, such as a PDA, its functionality and possible applications, can easily put a new user off getting started with learning new work processes and tools. Instead there is a feeling of frustration, rejection of the new solution and resistance to change.

PDA Intro

PDA Intro is a 45 minute visual user manual on how the basic functions of a PDA work.

The programme acts as a work of reference. It is built in modules so the user can choose which modules he wants to take.

PDA Intro has been developed for new PDA users who have basic PC knowledge but are not super-users. It is also an obvious choice for employees who have reading difficulties, speak a foreign language or are dyslexic.

Advantages

- Quick training in the basic functionality of a PDA.
- Easier introduction of mobile units in a company.
- No introductory training.
- Knowledge on hand in the actual user situation directly on the PDA.
- Fewer resources spent on internal support.
- Quicker integration of new employees and temps.
- No expenses for printed teaching material.
- New training modules can easily be made and built into the programme.

Educational method of learning

The programme is visually illustrated with pictures, sound and limited text. It is built up as reference work so you can choose either to study the whole programme in one go or to look up the part you need to study.

The programme menu is built in modules in which each module has a sub section. After a section has been taken, it is marked in green in the menu. If you have been into a section but have not completed it, the section will be marked in brown so you can see what you still need to do.

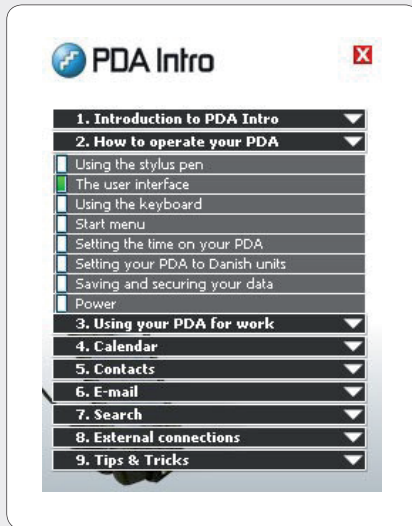
New supplementary modules can be developed to tailor the programme to an individual company.

“The major challenge with new technology is to get people to use it and understand how it works. PDA Intro is developed specially to help new PDA users, to make the introduction to a new mobile solution easier.”

Michael Judson, Product Manager, HandStep.

PDA Intro

An introductory programme



PDA Intro was developed for HandStep by Courseware, a specialist in Mobile learning. M-learning programmes are designed specifically to train employees on PDAs and smartphones. Read more about m-learning on www.m-learning.dk



HandStep is the leading developer of mobile solutions which improve effectiveness and customer service. We replace manual, paper based working procedures with electronic and integrated processes. www.handstep.com

A programme with advantages

PDA Intro facilitates the introduction of the PDA as a tool in the company from the point of view of the user, the IT department and the HR department.

Advantage for the user

By starting with a basic introduction to the PDA's functionality, the user avoids becoming frustrated from a lack of understanding of the PDA and its functionality, before he even begins using the new mobile solution. He can practise the PDA's functionality and revise his knowledge as required – at his own pace – anywhere – any time.

Advantage for the IT Department

On average the IT department spends ½ to 1 hour daily per employee in an introductory phase to explain to the employees how to use the basic functions of a PDA. If the user starts by going through PDA Intro he can look up in the programme by himself and find the answers to his questions, thus saving support resources in the IT department.

Advantage for the HR Department

Many companies spend up to three hours on introduction courses for new employees with so-called neighbour training where the employee is taken away from his work routines to take the training. Despite the time spent on this training, one course is seldom enough for people to be able to remember the specific information in the actual work situation. With PDA Intro installed on the employee's PDA, the individual user is able to learn how to use his PDA anywhere and can refresh his knowledge as required at anytime. In this way the employee is quickly able to use his PDA effectively on a daily basis.

In addition, the HR Department saves the costs of printed material, food and drink, and fees for the instructor on a training course.

If you would like to know more

Read more about PDA Intro on www.handstep.com

“Employee development and training on the job play a continuously greater role in our life today. PDA Intro has been developed to make learning mobile solutions more effective. For the benefit of both the employee and the company”.

Brian Nielsson, Founder, HandStep.